



**BRIDGEVIEW MFG. INC.**



## **2014 New Holland T9.600 Ag Adapter**

### **Scraper Hitch**

### **Assembly Manual**

Last Updated: November 12, 2025

**Bridgeview Manufacturing Inc.**

P.O. Box 4

Gerald, Saskatchewan, Canada

S0A 1B0

Phone: 1-306-745-2711

Fax: 1-306-745-3364

Email: [bridgeview@bridgeviewmfg.ca](mailto:bridgeview@bridgeviewmfg.ca)

[www.bridgeviewmanufacturing.com](http://www.bridgeviewmanufacturing.com)

## 1 Parts Book

The following diagrams show the part numbers for ordering any replacement parts on a 2014 New Holland T9.600 Ag Adapter Scraper Hitch. Some components may not look exactly as shown.

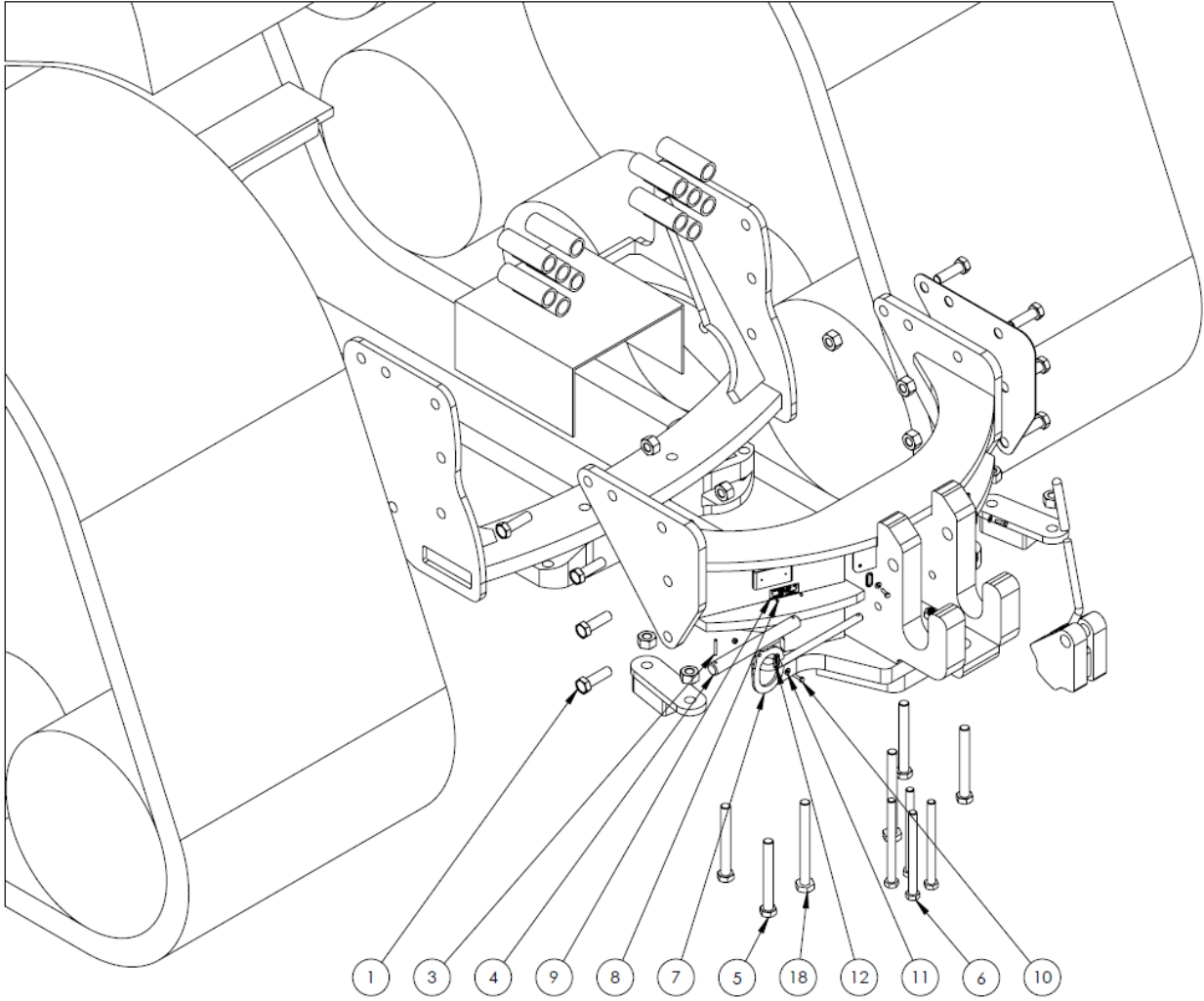
Quantities are listed for as shown. The diagrams should be referenced to find the part number, and order quantities should be based on what is required, not necessarily by the quantity on the table.

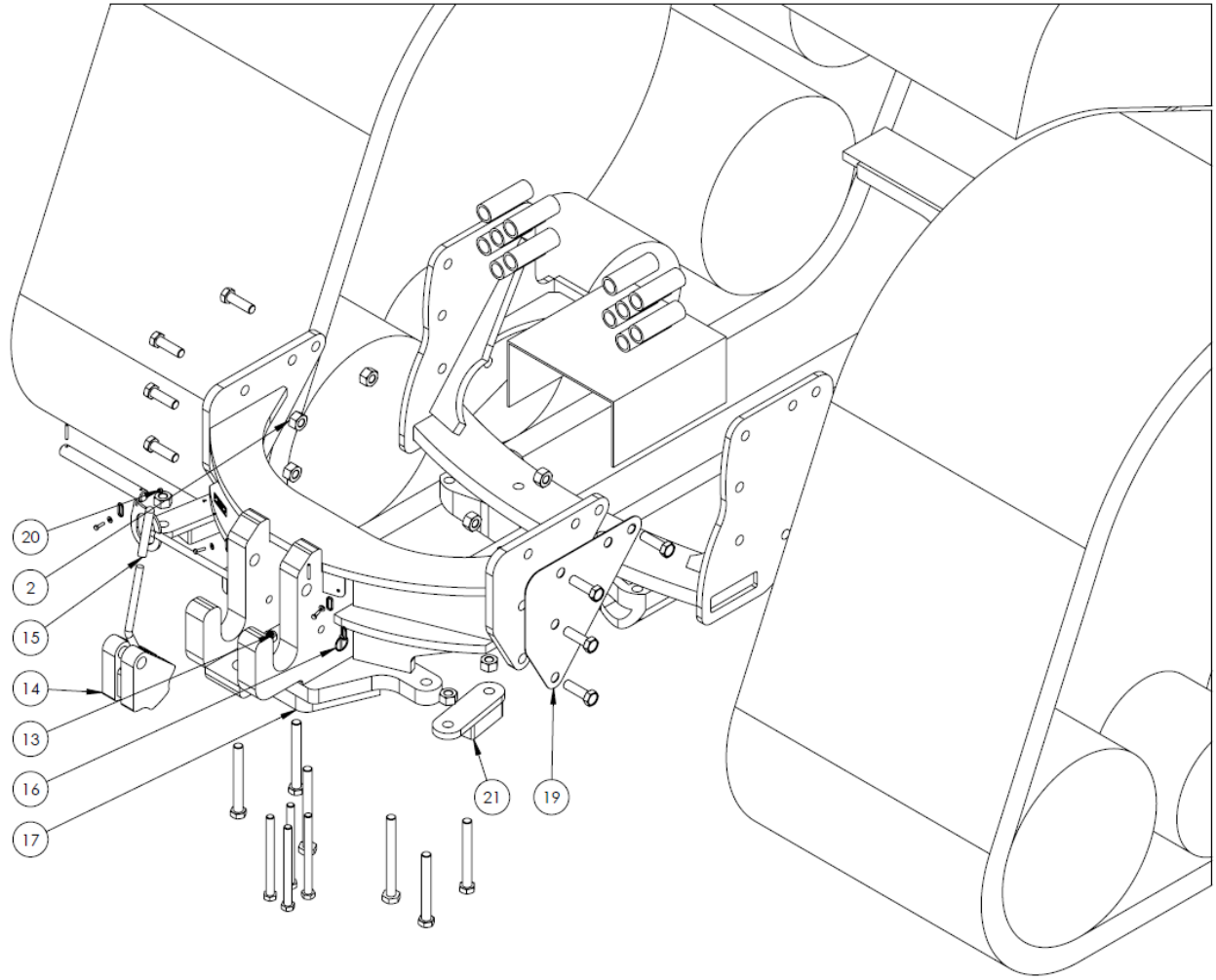
Left and right as used in the parts book is as viewed from the rear of the tractor looking in the direction of travel.

### 1.1 Adapter Assembly

1. Make sure drawbar pin on the tractor is in hole closer to the rear

Rear of Tractor

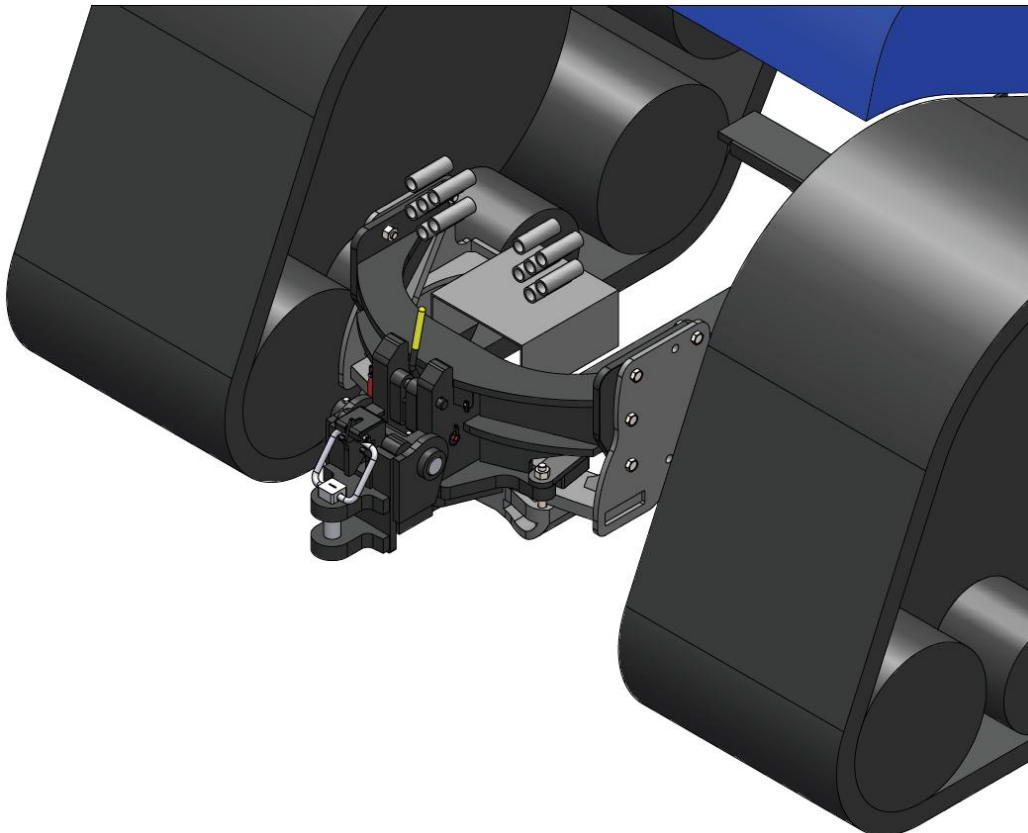
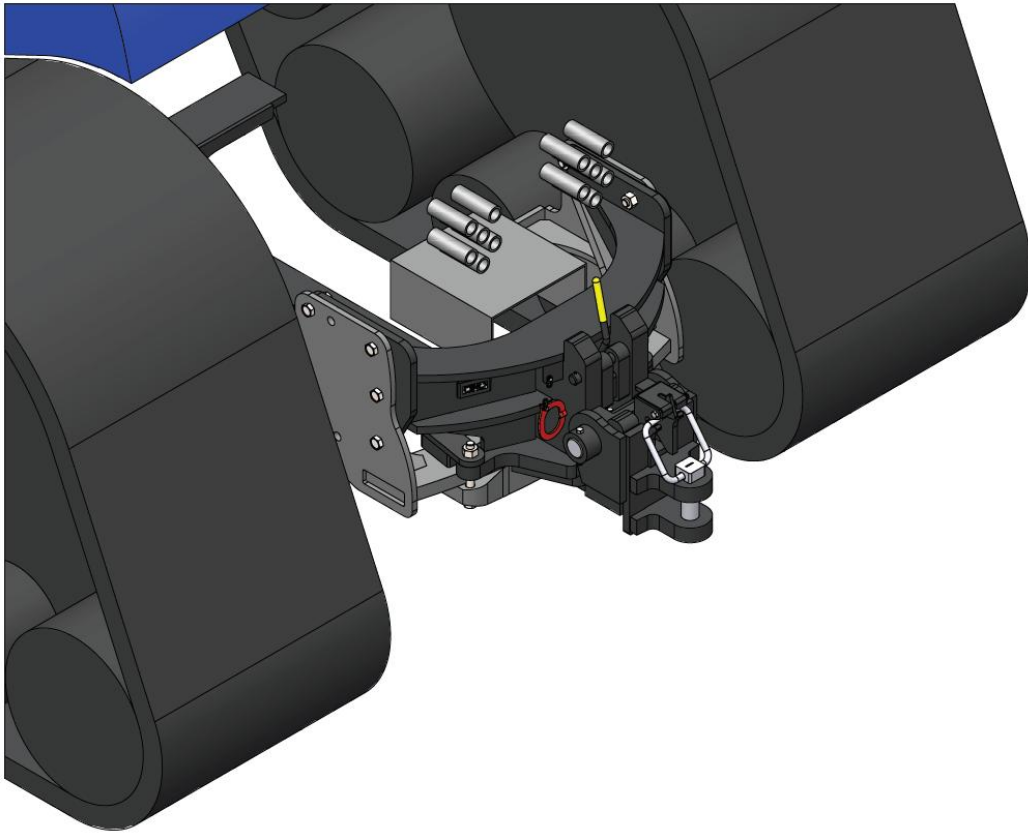




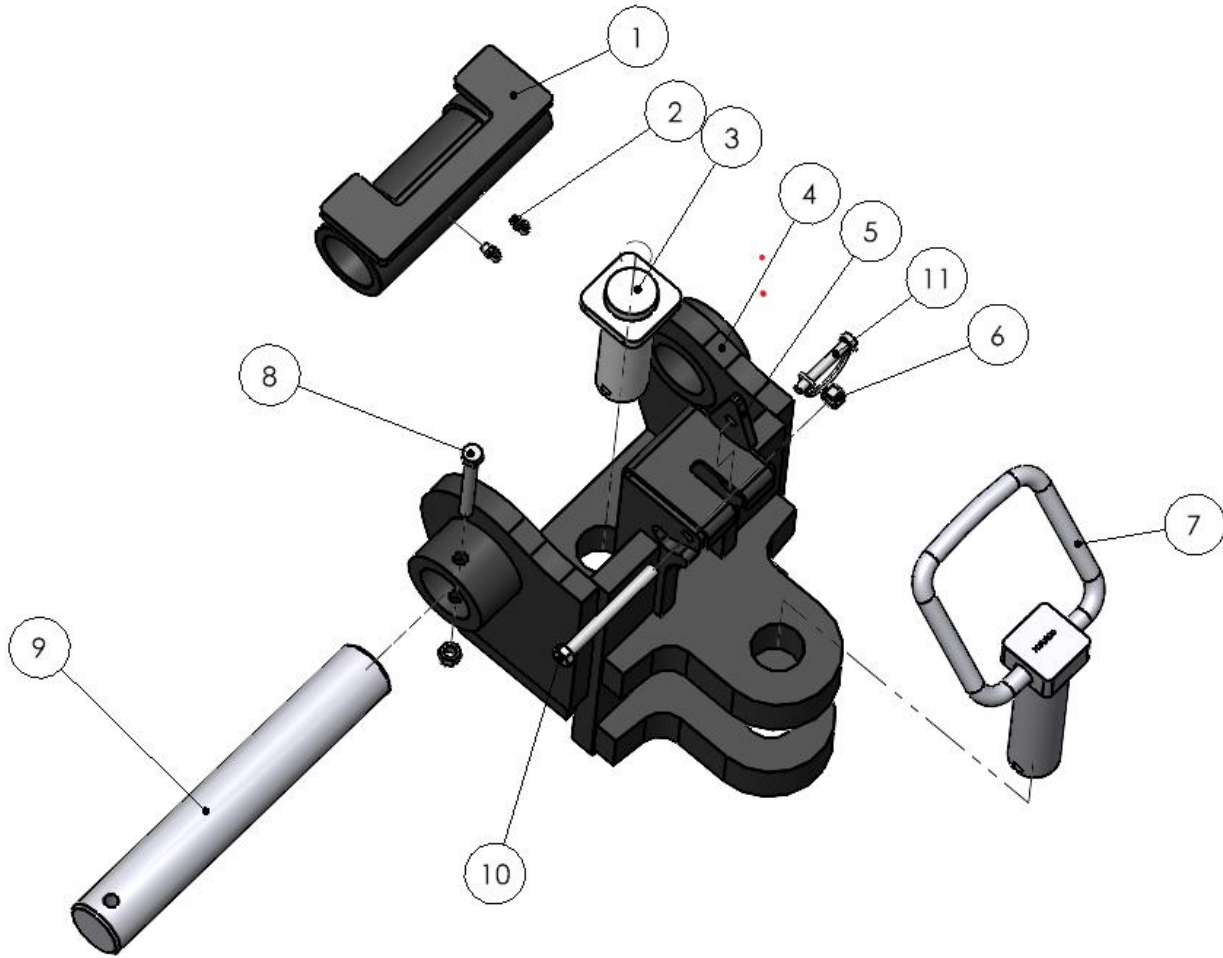
| <b>Adapter Assembly</b> |                                  |             |            |
|-------------------------|----------------------------------|-------------|------------|
|                         | <b>Description</b>               | <b>ID #</b> | <b>QTY</b> |
| 1                       | Bolt, M24 x 3 x 80 (Gr 10.9)     | 28590       | 8          |
| 2                       | Hex nut, M24 x 3 (Gr. 10.9)      | 28594       | 14         |
| 3                       | Roll Pin, ¼" x 1-3/4"            | 28589       | 2          |
| 4                       | Main Lock Shaft                  | 28614       | 1          |
| 5                       | Bolt, M24 x 3 x 200 (Gr. 10.9)   | 28591       | 4          |
| 6                       | Bolt, M20 x 2.5 x 240 (Gr. 10.9) | 28593       | 4          |
| 7                       | Lock Pin                         | 28611       | 1          |
| 8                       | Pop rivet, 1/8" x ½"             | 27192       | 2          |
| 9                       | Serial Number Plate              | -           | 1          |
| 10                      | Bolt, ¼" x 1"                    | 11810       | 3          |
| 11                      | Flat washer, ¼"                  | 11666       | 3          |
| 12*                     | Plated chain, 3/16" x 20"        | 11618       | 2          |
| 13                      | Hex nut, M20 x 2.5 (Gr. 10.9)    | 28595       | 4          |
| 14                      | Main Lock                        | 28607       | 1          |
| 15                      | Rubber Handle                    | 11796       | 1          |
| 16                      | Lynch Pin, 3/16" x 1-1/4"        | 13233       | 1          |
| 17                      | Main Adapter                     | 28596       | 1          |
| 18                      | Bolt, M24 x 3 x 240              | 28592       | 2          |
| 19                      | Shim                             | 28615       | 1          |
| 20                      | Nylon lock nut, ¼"               | 11664       | 3          |
| 21                      | New Holland Hitch Adapter Spacer | 32351       | 2          |

\*Plated Chain is to be connected from main adapter (28596) to main lock shaft (28614) as well from main adapter (28596) to lynch pin (13233)

1.1.1 After Assembly

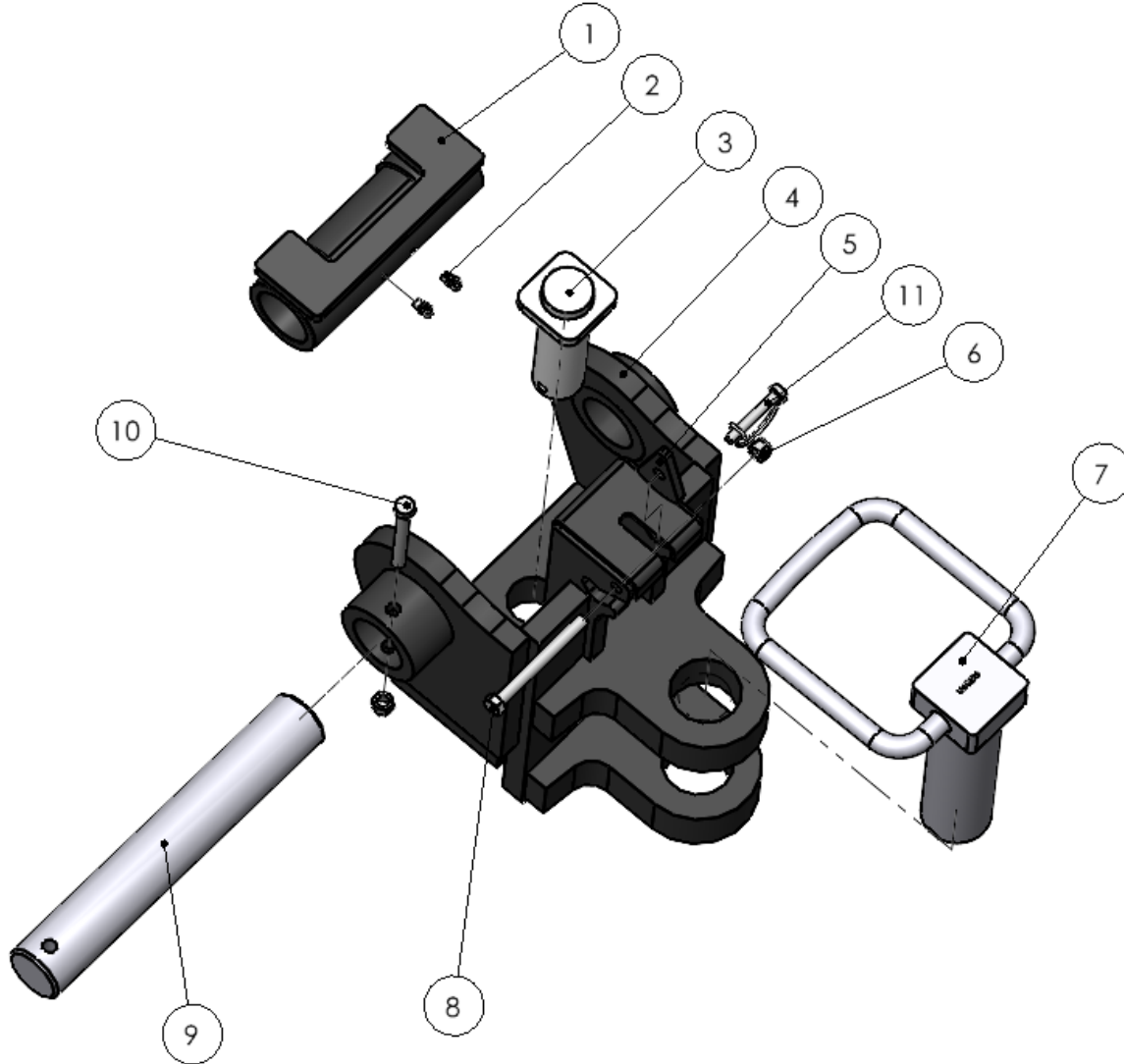


**Optional Scraper to Ag Adapter Category 4 (31401)**



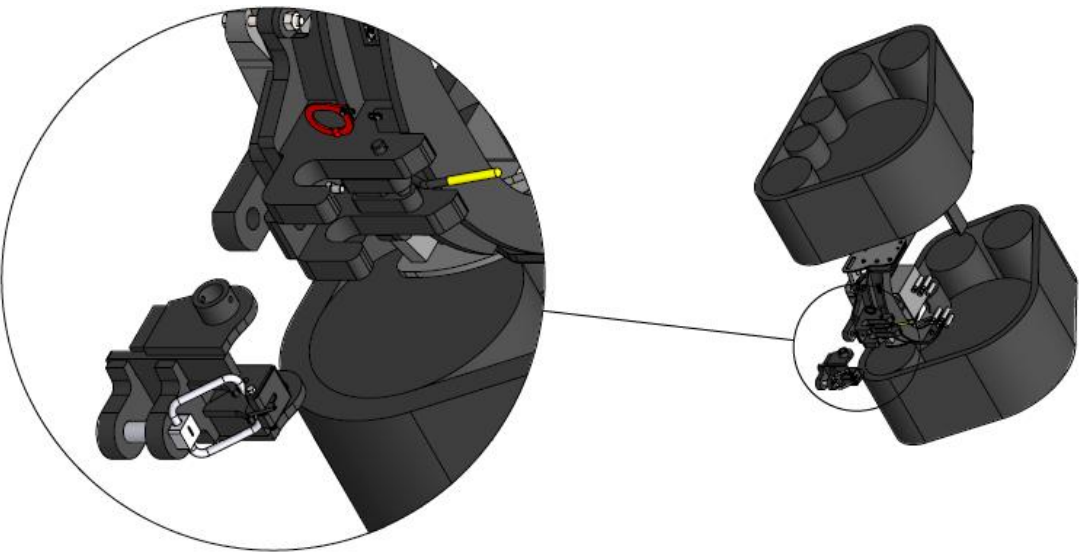
| <b>Scraper to Ag Adapter Assembly</b> |                                  |             |            |
|---------------------------------------|----------------------------------|-------------|------------|
|                                       | <b>Description</b>               | <b>ID #</b> | <b>QTY</b> |
| 1                                     | Scraper Adapter                  | 28334       | 1          |
| 2                                     | Grease Zerk, ¼-28 x 90°          | 16389       | 2          |
| 3                                     | Case IH Ag Adaptor Pin           | 35219       | 1          |
| 4                                     | Category 4 Scraper to Ag Adapter | 31390       | 1          |
| 5                                     | Ag Adapter Pin Stopper           | 31399       | 1          |
| 6                                     | Nylon Lock Nut, ½"               | 10241       | 2          |
| 7                                     | Category 4 Hitch Pin             | 31373       | 1          |
| 8                                     | Bolt, ½" x 4-1/2"                | 15574       | 1          |
| 9                                     | Ag Adapter Pin                   | 31400       | 1          |
| 10                                    | Bolt, ½" x 5"                    | 15400       | 1          |
| 11                                    | Lock Pin (3/8" x 2-3/16" Usable) | 35214       | 1          |

**Optional Scraper to Ag Adapter Category 5 (35226)**

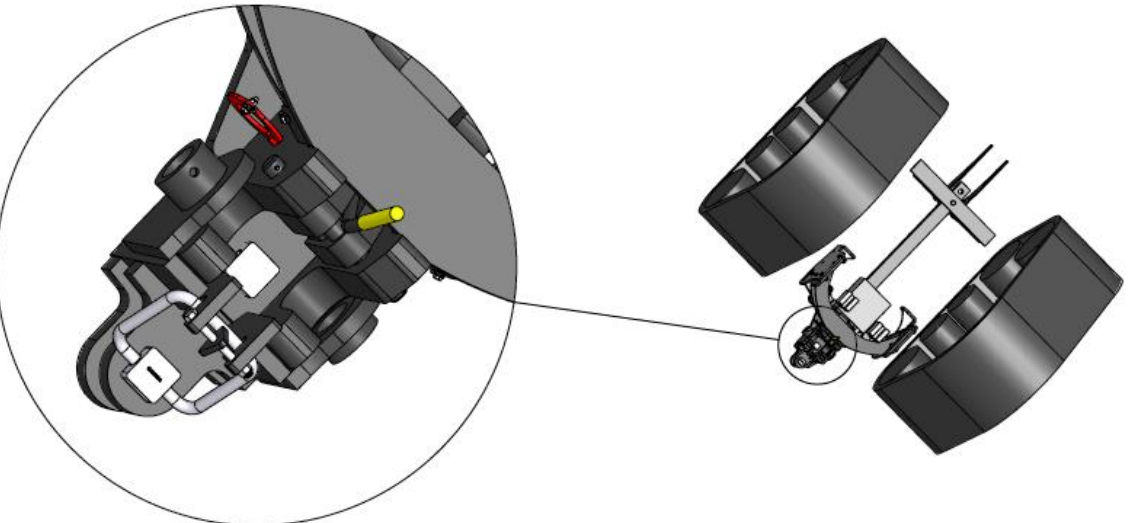


| <b>Scraper to Ag Adapter Assembly</b> |                                  |             |            |
|---------------------------------------|----------------------------------|-------------|------------|
|                                       | <b>Description</b>               | <b>ID #</b> | <b>QTY</b> |
| 1                                     | Scraper Adapter                  | 28334       | 1          |
| 2                                     | Grease Zerk, ¼-28 x 90°          | 16389       | 2          |
| 3                                     | Case IH Ag Adaptor Pin           | 35219       | 1          |
| 4                                     | Category 5 Scraper to Ag Adapter | 35222       | 1          |
| 5                                     | Ag Adapter Pin Stopper           | 31399       | 1          |
| 6                                     | Nylon Lock Nut, ½"               | 10241       | 2          |
| 7                                     | Category 5 Hitch Pin             | 31374       | 1          |
| 8                                     | Bolt, ½" x 5                     | 15400       | 1          |
| 9                                     | Ag Adapter Pin                   | 31400       | 1          |
| 10                                    | Bolt, ½" x 4-1/2"                | 15574       | 1          |
| 11                                    | Lock Pin (3/8" x 2-3/16" Usable) | 35214       | 1          |

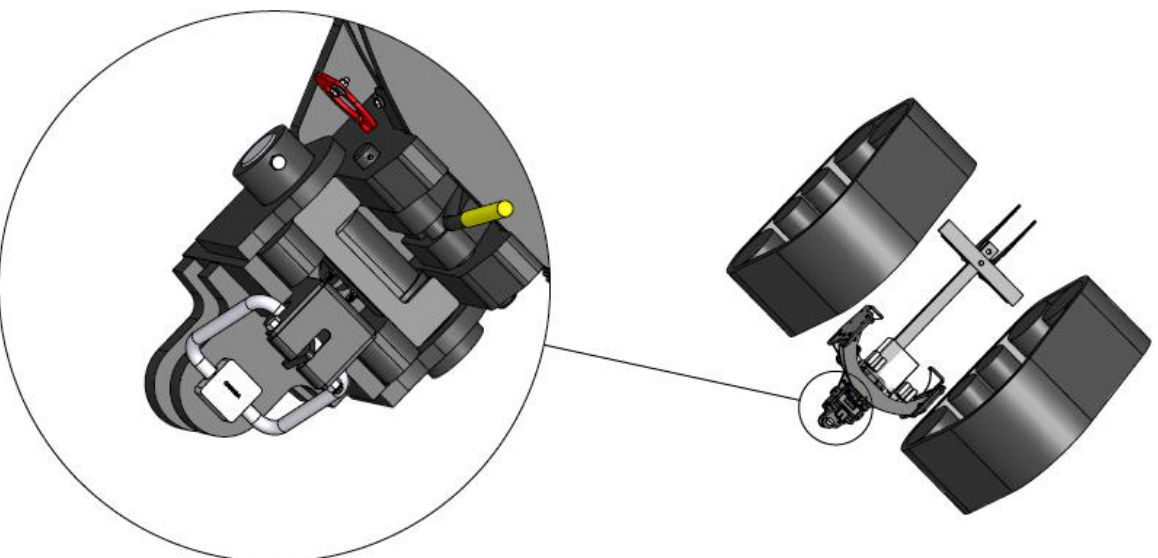
**Step 1**



**Step 2**



**Step 3**



# FASTENER TORQUE CHARTS

|         | <b>BOLT CLAMP LOADS</b><br>Suggested Assembly Torque Values |                           |               |               |                  |                  |                           |               |               |                  |
|---------|---|---------------------------|---------------|---------------|------------------|------------------|---------------------------|---------------|---------------|------------------|
|         | USS/SAE GRADE 5   |                           |               |               |                  | USS/SAE GRADE 8  |                           |               |               |                  |
|         | DIAMETER & THREADS PER INCH                                 | TENSILE STRENGTH MIN. PSI | PROOF LOAD LB | CLAMP LOAD LB | TORQUE DRY FT LB | LUBRICATED FT LB | TENSILE STRENGTH MIN. PSI | PROOF LOAD LB | CLAMP LOAD LB | TORQUE DRY FT LB |
| 1/4-20  | 120,000   | 2,700                     | 2,020         | 8             | 6.3              | 150,000          | 3,800                     | 2,850         | 12            | 9                |
| 28      | 120,000   | 3,100                     | 2,320         | 10            | 7.2              | 150,000          | 4,350                     | 3,250         | 14            | 10               |
| 5/16-18 | 120,000   | 4,450                     | 3,340         | 17            | 13               | 150,000          | 6,300                     | 4,700         | 24            | 18               |
| 24      | 120,000   | 4,900                     | 3,700         | 19            | 14               | 150,000          | 6,950                     | 5,200         | 27            | 20               |
| 3/8-16  | 120,000   | 6,600                     | 4,950         | 30            | 23               | 150,000          | 9,300                     | 6,980         | 45            | 35               |
| 24      | 120,000   | 7,450                     | 5,600         | 35            | 25               | 150,000          | 10,500                    | 7,900         | 50            | 35               |
| 7/16-14 | 120,000   | 9,050                     | 6,780         | 50            | 35               | 150,000          | 12,800                    | 9,550         | 70            | 50               |
| 20      | 120,000   | 10,100                    | 7,570         | 55            | 40               | 150,000          | 14,200                    | 10,650        | 80            | 60               |
| 1/2-13  | 120,000   | 12,100                    | 9,050         | 75            | 55               | 150,000          | 17,000                    | 12,750        | 110           | 80               |
| 20      | 120,000   | 13,600                    | 10,200        | 85            | 65               | 150,000          | 19,200                    | 14,400        | 120           | 90               |
| 9/16-12 | 120,000   | 15,500                    | 11,600        | 110           | 80               | 150,000          | 21,800                    | 16,350        | 150           | 110              |
| 18      | 120,000   | 17,300                    | 12,950        | 120           | 90               | 150,000          | 24,400                    | 18,250        | 170           | 130              |
| 5/8-11  | 120,000   | 19,200                    | 14,400        | 150           | 110              | 150,000          | 27,100                    | 20,350        | 210           | 160              |
| 18      | 120,000   | 21,800                    | 16,350        | 170           | 130              | 150,000          | 30,700                    | 23,000        | 240           | 180              |
| 3/4-10  | 120,000   | 28,400                    | 21,300        | 260           | 200              | 150,000          | 40,100                    | 30,100        | 380           | 280              |
| 16      | 120,000   | 31,700                    | 23,780        | 300           | 220              | 150,000          | 44,800                    | 33,500        | 420           | 310              |
| 7/8-9   | 120,000   | 39,300                    | 29,450        | 430           | 320              | 150,000          | 55,400                    | 41,600        | 600           | 450              |
| 14      | 120,000   | 43,300                    | 32,450        | 470           | 350              | 150,000          | 61,100                    | 45,800        | 670           | 500              |
| 1-8     | 120,000   | 51,500                    | 38,600        | 640           | 480              | 150,000          | 72,700                    | 54,500        | 910           | 680              |
| 14      | 120,000   | 57,700                    | 43,300        | 720           | 540              | 150,000          | 81,500                    | 61,100        | 1,020         | 760              |

When using anti-seize, reduce the lubed chart reading by 20% to properly torque. Always lubricate and use lubed torque values.

Torques for Grades 5 and 8 were calculated based on the following relationship:

$$T = R D P$$

Where: T = Torque (ft lb)

D = Nominal Diameter (in)

P = Clamp Load (lb)

R = Tightening Coefficient

The value of R is assumed to be equal to .20 for dry, unplated conditions and equal to .15 for lubricated, including plated, conditions. Actual values of R can vary between .05 and .35 for commonly encountered conditions.

**NOTES:**

The above recommended assembly torques are offered as a guide only. Torque specifications, especially for critical joints, should be determined under actual assembly conditions due to the many variables involved which are difficult to predict and do affect the torque-tension relationship.

The above recommended clamp loads are based on 75% of the minimum specified proof loads for each grade and size.

| STRENGTH GRADE | APPLICABLE SIZES                   | PROOF LOAD STRESS (PSI) | YIELD STRENGTH MIN. STRESS (PSI) | TENSILE STRESS MIN. (PSI) |
|----------------|------------------------------------|-------------------------|----------------------------------|---------------------------|
| SAE Gr. 5      | 1/4 to 1" diameter                 | 85,000                  | 92,000                           | 120,000                   |
|                | over 1" diameter to 1-1/2 diameter | 74,000                  | 81,000                           | 105,000                   |
| SAE Gr. 8      | 1/4 to 1" diameter                 | 120,000                 | 130,000                          | 150,000                   |

Pounds to Inch Pound Conversion

lb x 12 = inch lb

Example: 9 lb x 12 = 108 inch lb

| FRACTIONAL MEASUREMENT |                       |                 |
|------------------------|-----------------------|-----------------|
| BOLT DIAMETER          | CAP SCREW WRENCH SIZE | NUT WRENCH SIZE |
| 1/4                    | 7/16                  | 7/16            |
| 5/16                   | 1/2                   | 1/2             |
| 3/8                    | 9/16                  | 9/16            |
| 7/16                   | 5/8                   | 11/16           |
| 1/2                    | 3/4                   | 3/4             |
| 9/16                   | 13/16                 | 7/8             |
| 5/8                    | 15/16                 | 15/16           |
| 3/4                    | 1-1/8                 | 1-1/8           |
| 7/8                    | 1-5/16                | 1-5/16          |
| 1"                     | 1-1/2                 | 1-1/2           |
| 1-1/8                  | 1-11/16               | 1-11/16         |
| 1-1/4                  | 1-7/8                 | 1-7/8           |
| 1-3/8                  | 2-1/16                | 2-1/16          |
| 1-1/2                  | 2-1/4                 | 2-1/4           |
| 1-3/4                  | 2-5/8                 | 2-5/8           |
| 2"                     | 3"                    | 3"              |
| 2-1/4                  | 3-3/8                 | 3-3/8           |
| 2-1/2                  | 3-3/4                 | 3-3/4           |
| 2-3/4                  | 4-1/8                 | 4-1/8           |
| 3"                     | 4-1/2                 | 4-1/2           |

Imperial has made a concerted effort to provide accurate information in its catalog and on its website, however Imperial assumes no responsibility for the accuracy of the information. All information published by Imperial in its catalogs, marketing literature, and on its website is provided "as is" without warranty, expressed or implied. Imperial and its vendors disclaim all warranties, expressed or implied including, without limitation, warranties of merchantability and fitness for a particular purpose.

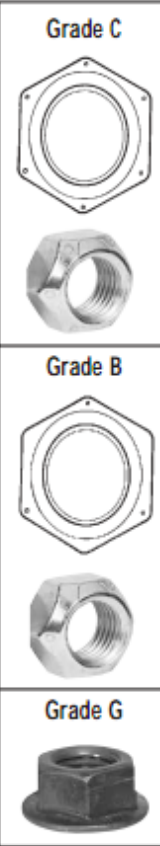


# FASTENER TORQUE CHARTS

GUIDE FOR PREVAILING-TORQUE LOCK NUT ASSEMBLY TORQUES (CAD AND WAX, GRADE B, C, AND GRADE G FLANGE NUTS) LOCK NUT STANDARDS FROM IFI-100 REQUIREMENTS

Torque-Tension Requirements

| Size<br>Threads Per Inch | GRADE B            |                            |       | GRADE C            |                            |       | GRADE G            |                            |       |
|--------------------------|--------------------|----------------------------|-------|--------------------|----------------------------|-------|--------------------|----------------------------|-------|
|                          | CLAMP LOAD<br>(Lb) | ASSEMBLY<br>TORQUE<br>MAX. | MIN.  | CLAMP LOAD<br>(Lb) | ASSEMBLY<br>TORQUE<br>MAX. | MIN.  | CLAMP LOAD<br>(Lb) | ASSEMBLY<br>TORQUE<br>MAX. | MIN.  |
| 1/4-20                   | 2,000              | 85**                       | 60**  | 2,850              | 125**                      | 85**  | 2,850              | 150**                      | 100** |
| 1/4-28                   | 2,300              | 90**                       | 65**  | 3,250              | 125**                      | 85**  | 3,250              | 160**                      | 105** |
| 5/16-18                  | 3,350              | 150**                      | 110** | 4,700              | 190**                      | 130** | 4,700              | 240**                      | 155** |
| 5/16-24                  | 3,700              | 160**                      | 120** | 5,200              | 200**                      | 140** | 5,200              | 230**                      | 155** |
| 3/8-16                   | 4,950              | 20                         | 14.5  | 6,950              | 28                         | 20    | 6,950              | 32                         | 21    |
| 3/8-24                   | 5,600              | 22                         | 16    | 7,900              | 29                         | 21    | 7,900              | 33                         | 22    |
| 7/16-14                  | 6,800              | 32                         | 23    | 9,600              | 43                         | 31    | 9,600              | 51                         | 34    |
| 7/16-20                  | 7,550              | 34                         | 24    | 10,700             | 43                         | 31    | 10,700             | 60                         | 40    |
| 1/2-13                   | 9,050              | 50                         | 37    | 12,800             | 62.5                       | 45    | 12,800             | 85                         | 55    |
| 1/2-20                   | 10,200             | 52.5                       | 37.5  | 14,440             | 70                         | 50    | 14,440             | 89                         | 59    |
| 9/16-12                  | 11,600             | 70                         | 50    | 16,400             | 95                         | 70    | 16,400             | 120                        | 80    |
| 9/16-18                  | 13,000             | 77.5                       | 57.5  | 18,300             | 95                         | 70    | 18,300             | 132                        | 88    |
| 5/8-11                   | 14,500             | 95                         | 70    | 20,300             | 122.5                      | 90    | 20,300             | 143                        | 95    |
| 5/8-18                   | 16,300             | 97.5                       | 72.5  | 23,000             | 125                        | 90    | 23,000             | 175                        | 115   |
| 3/4-10                   | 21,300             | 165                        | 125   | 30,100             | 210                        | 155   | 30,100             | 240                        | 160   |
| 3/4-16                   | 23,800             | 165                        | 120   | 33,600             | 210                        | 155   | 33,600             | 270                        | 170   |
| 7/8-9                    | 29,500             | 250                        | 185   | 41,600             | 312.5                      | 225   | 41,600             | 360                        | 260   |
| 7/8-14                   | 32,400             | 270                        | 200   | 45,800             | 312.5                      | 225   | 45,800             | 402                        | 247   |
| 1-8                      | 38,700             | 375                        | 275   | 54,600             | 462.5                      | 360   | 54,600             | 530                        | 410   |
| 1-12                     | 42,300             | 395                        | 290   | 59,750             | 490                        | 360   | 59,750             | —                          | —     |
| 1-14                     | 43,000             | 400                        | 300   | 61,100             | 500                        | 362.5 | 61,100             | 645                        | 398   |
| 1-1/8-7                  | 42,100             | 404                        | 294   | 69,000             | 585                        | 454   | 69,000             | —                          | —     |
| 1-1/8-12                 | 47,500             | 437                        | 327   | 76,800             | 622                        | 453   | 76,800             | —                          | —     |
| 1-1/4-7                  | 53,500             | 513                        | 375   | 87,000             | 736                        | 573   | 87,000             | —                          | —     |
| 1-1/4-12                 | 59,700             | 549                        | 412   | 96,600             | 782                        | 570   | 96,600             | —                          | —     |
| 1-3/8-6                  | 63,800             | 612                        | 445   | 104,000            | 880                        | 685   | 104,000            | —                          | —     |
| 1-3/8-12                 | 72,900             | 670                        | 503   | 118,000            | 955                        | 696   | 118,000            | —                          | —     |
| 1-1/2-6                  | 77,600             | 745                        | 545   | 127,000            | 1,075                      | 837   | 127,000            | —                          | —     |
| 1-1/2-12                 | 87,700             | 807                        | 605   | 142,000            | 1,150                      | 837   | 142,000            | —                          | —     |



- Clamp loads for the Grade B lock nuts equal 75% of the bolt proof loads specified for SAE J-429 Grade 5, and ASTM A-449 bolts.
- Clamp loads for Grade C lock nuts equal 75% of the bolt proof loads specified for SAE J-429 Grade 8, and ASTM A-354 Grade BD bolts.
- IFI-100 does not govern lock nuts above 1". The values shown in the chart are to be used as a mid-range guideline.
- \*\* Torque values for 1/4" and 5/16" sizes are in inch lb. All other torque values are in foot lb.

## METRIC TORQUE CHART FOR HEX HEAD CAP SCREWS

| Size             | CLASS | NEWTON METERS |          | FOOT POUNDS (APPROX.) |          | CLASS |
|------------------|-------|---------------|----------|-----------------------|----------|-------|
|                  |       | ZINC PLATED   | UNPLATED | ZINC PLATED           | UNPLATED |       |
| M4 x .70 Pitch   | 8.8   | 3.1           | 2.2      | 2.30                  | 1.65     | 8.8   |
| M5 x .80 Pitch   | 8.8   | 6.1           | 5.5      | 4.58                  | 4.13     |       |
| M6 x 1.00 Pitch  | 8.8   | 10.4          | 9.5      | 7.80                  | 7.13     |       |
| M7 x 1.00 Pitch  | 8.8   | 17.0          | 15.5     | 12.75                 | 11.63    |       |
| M8 x 1.25 Pitch  | 8.8   | 25.0          | 23.0     | 18.75                 | 17.25    |       |
| M8 x 1.00 Pitch  | 8.8   | 27.0          | 24.5     | 20.25                 | 18.38    |       |
| M10 x 1.50 Pitch | 8.8   | 51.0          | 46.0     | 38.25                 | 34.50    |       |
| M10 x 1.00 Pitch | 8.8   | 57.0          | 52.0     | 42.75                 | 39.00    |       |
| M10 x 1.25 Pitch | 8.8   | 54.0          | 49.0     | 40.50                 | 36.75    |       |
| M12 x 1.75 Pitch | 8.8   | 87.0          | 79.0     | 65.25                 | 59.25    |       |
| M12 x 1.25 Pitch | 8.8   | 96.0          | 87.0     | 72.00                 | 65.25    |       |
| M12 x 1.50 Pitch | 8.8   | 92.0          | 83.0     | 69.00                 | 62.25    |       |
| M14 x 2.00 Pitch | 8.8   | 140.0         | 125.0    | 105.00                | 93.75    | 10.9  |
| M14 x 1.50 Pitch | 8.8   | 150.0         | 135.0    | 112.50                | 101.25   |       |
| M16 x 2.00 Pitch | 8.8   | 215.0         | 195.0    | 161.25                | 146.25   |       |
| M18 x 2.50 Pitch | 8.8   | 300.0         | 280.0    | 225.00                | 210.00   |       |
| M20 x 2.50 Pitch | 8.8   | 430.0         | 390.0    | 322.50                | 292.50   |       |
| M22 x 2.50 Pitch | 8.8   | 580.0         | 530.0    | 435.00                | 397.50   |       |
| M24 x 3.00 Pitch | 8.8   | 740.0         | 670.0    | 555.00                | 502.50   |       |
| M6 x 1.00 Pitch  | 10.9  | 15.5          | 14.0     | 11.63                 | 10.50    |       |
| M8 x 1.25 Pitch  | 10.9  | 37.0          | 34.0     | 27.75                 | 25.50    |       |
| M10 x 1.50 Pitch | 10.9  | 75.0          | 68.0     | 56.25                 | 51.00    |       |
| M12 x 1.75 Pitch | 10.9  | 160.0         | 117.0    | 97.50                 | 87.75    |       |
| M14 x 2.00 Pitch | 10.9  | 205.0         | 185.0    | 153.75                | 138.75   |       |
| M16 x 2.00 Pitch | 10.9  | 310.0         | 280.0    | 232.50                | 210.00   |       |

## TORQUE CHART FOR STAINLESS STEEL CAP SCREWS

| SIZE    | 316<br>INCH-LB | 18/8<br>INCH-LB |
|---------|----------------|-----------------|
| 6-32    | 10.1           | 9.6             |
| 6-40    | 12.7           | 12.1            |
| 8-32    | 20.7           | 19.8            |
| 8-36    | 23.0           | 22.0            |
| 10-24   | 23.8           | 22.8            |
| 10-32   | 33.1           | 31.7            |
| 1/4-20  | 78.8           | 75.2            |
| 1/4-28  | 99.0           | 94.0            |
| 5/16-18 | 138.0          | 132.0           |
| 5/16-24 | 147.0          | 142.0           |
| 3/8-16  | 247.0          | 236.0           |
| 3/8-24  | 271.0          | 259.0           |
| 7/16-14 | 393.0          | 376.0           |
| 7/16-20 | 418.0          | 400.0           |
| 1/2-13  | 542.0          | 517.0           |
| 1/2-20  | 565.0          | 541.0           |
| 9/16-12 | 713.0          | 682.0           |
| 9/16-18 | 787.0          | 752.0           |
| 5/8-11  | 1,160.0        | 1,110.0         |
| 5/8-18  | 1,301.0        | 1,244.0         |
| 3/4-10  | 1,582.0        | 1,530.0         |
| 3/4-16  | 1,558.0        | 1,490.0         |
| 7/8-9   | 2,430.0        | 2,328.0         |
| 7/8-14  | 2,420.0        | 2,318.0         |
| 1"-8    | 3,595.0        | 3,440.0         |
| 1"-14   | 3,250.0        | 3,110.0         |

PHONE: 1-800-558-2808

FAX: 1-800-553-8769

WEB: www.imperialsupplies.com

