



**BRIDGEVIEW MFG. INC.**



## ***BALE KING 5400*** ***Round Bale Processor***

### ***Set-up Instructions***

Last Updated: July 2025

**Bridgeview Manufacturing Inc.**

P.O. Box 4

Gerald, SK

S0A 1B0

Phone: 1-306-745-2711

Fax: 1-306-745-3364

Email: [bmi@sasktel.net](mailto:bmi@sasktel.net)

[www.bridgeviewmanufacturing.com](http://www.bridgeviewmanufacturing.com)

When your new Bale King 5400 arrives by truck, there are a few things that must be done before it is ready for use. This manual will offer step-by-step instructions. Some steps may already be done by factory.

### 1. Remove shipping brackets

- Pull hoses out of the tub
- Remove the shipping package from the inside of the tub
- Disassemble the package and make sure all parts are present:

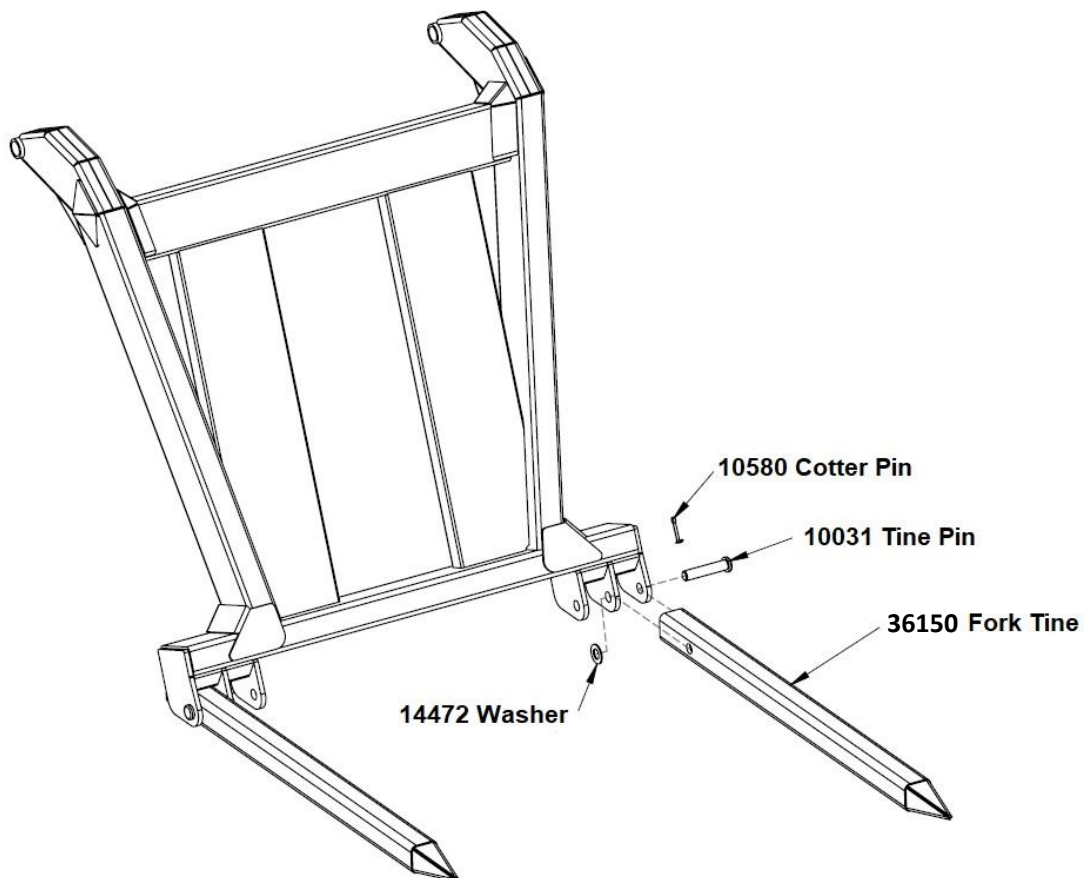
PTO Shaft

Fork Tines (x2)

SMV Sign

### 2. Install rear forks tines

- Lower forks and install tines as shown
- Once tines are installed, lift forks back up so tines don't drag on the ground



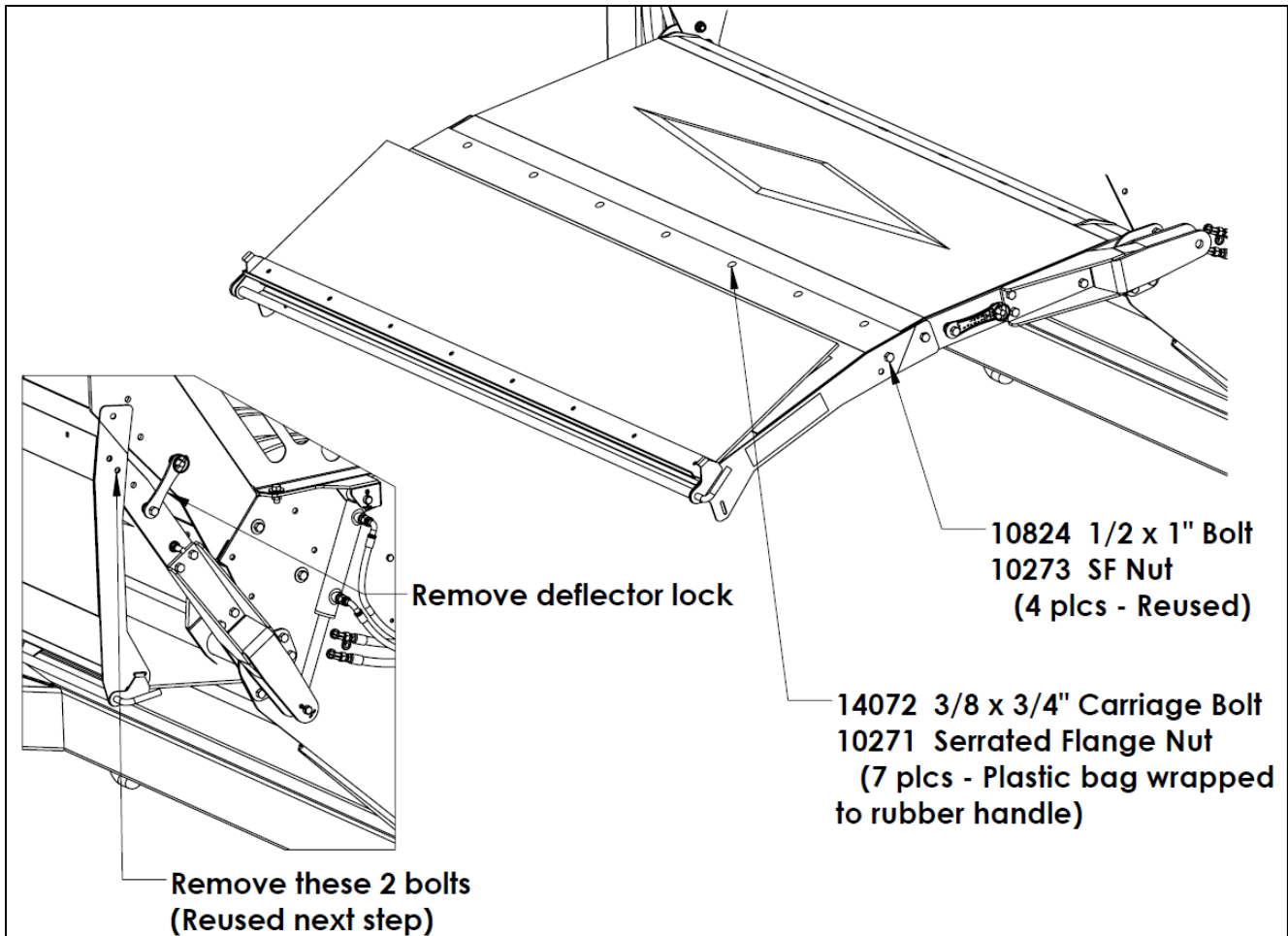
### 3. Unfold side deflector

- Remove safety lock
- Remove outer deflector by removing the four bolts connecting the two deflector pieces
- Lower the deflector using the hydraulics

NOTE: If machine has a diverter valve, the control box must be used to activate the deflector function.

**WARNING: DO NOT LOWER THE DEFLECTOR UNTIL UNFOLDED.  
IT WILL HIT THE TIRE**

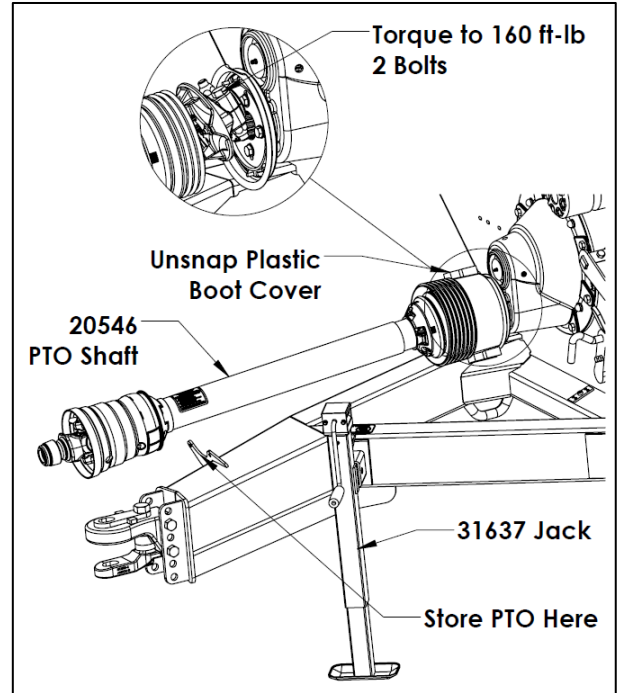
- Install the outer deflector reusing the removed bolts, plus additional bolts provided in the shipping package



- Lift the deflector when finished and install the safety lock.

**4. Install PTO shaft and Jack**

- Unsnap the PTO boot guard from the ring
- Install the PTO shaft through the guard and over the spline of the gearbox. Remove the two 5/8" bolts running through the coupler, then slide onto the shaft until the bolt holes line up with the groove. Tighten these bolts to 160 ft-lb.
- Snap the shield back into place
- Slide the outer half into the splines of the inner half. Make sure they are clean. Line up the spline with the tack weld with the missing inner spline.
- Rest PTO shaft on the storage bracket
- Relocate the jack

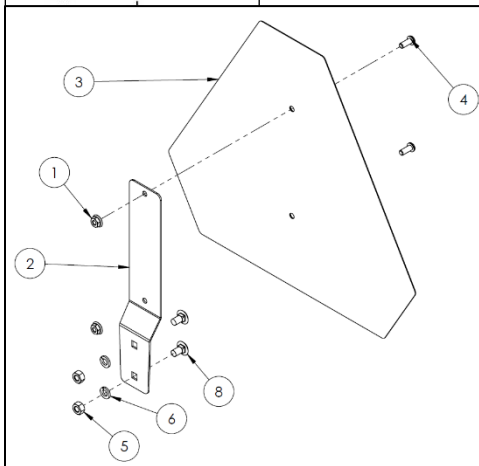
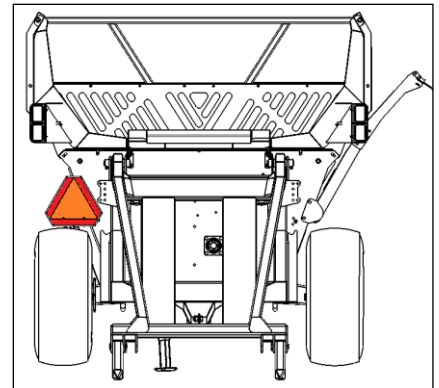
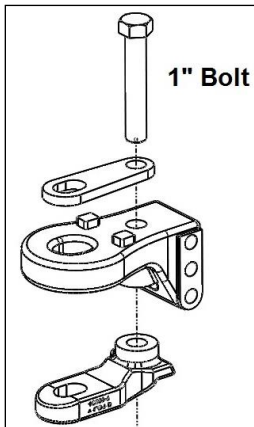


**5. Install Clevis Option**

- If the operating tractor does not have a hammer strap it is recommended to install this clevis. Otherwise, it is not recommended.

**6. Install SMV Sign**

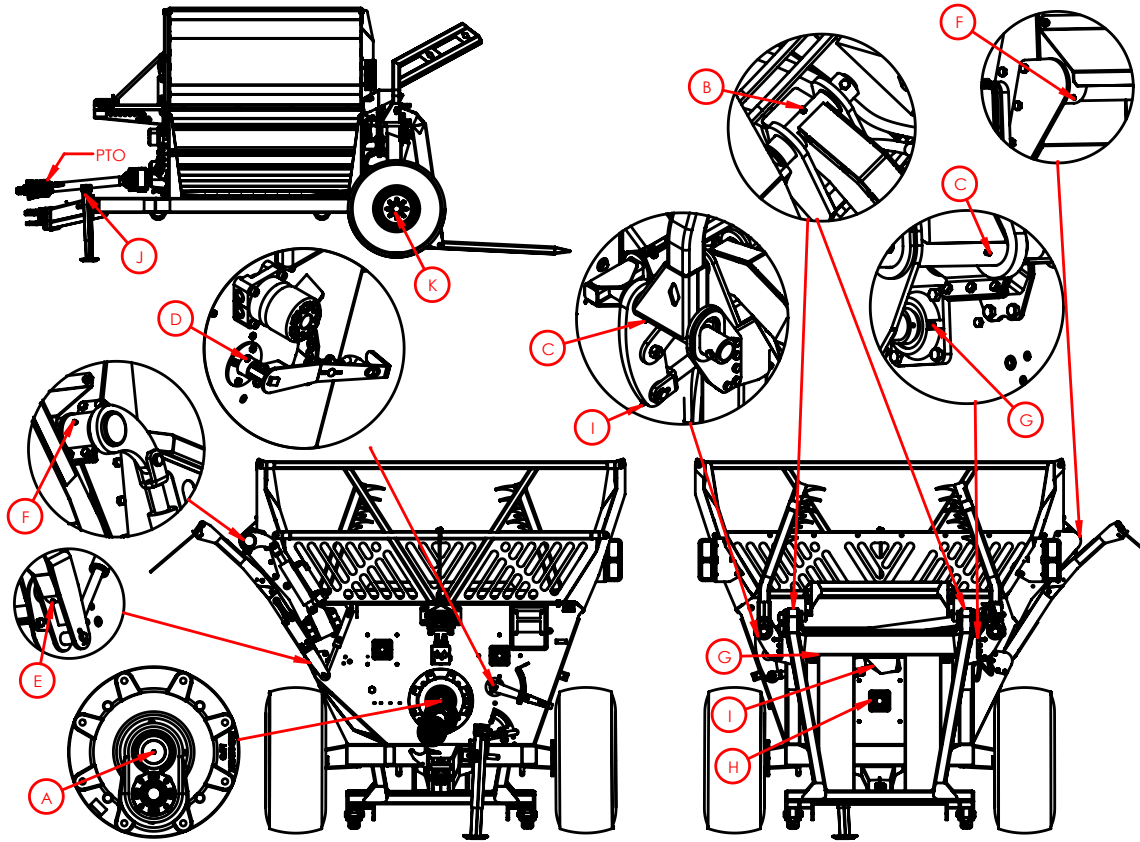
- Install the SMV sign in its appropriate location by bolting (#5,6,8) it to the square holes in the rear tub panel, just above the left tire.



#	DESCRIPTION	PART #	QTY
	Complete SMV Sign Kit	36030	1
1	Nut, 1/4" Serrated Flange	-	2
2	Galvanized Sign Bracket	-	1
3	Galvanized SMV Sign	-	1
4	Pan Head Bolt, 1/4" x 5/8"	-	2
5	Nut, 5/16"	-	2
6	Lock Washer, 5/16"	-	2
7	Galvanized Tapered Receiver Bracket	-	-
8	Carriage Bolt, 5/16" x 1/2"	-	2
9	Carriage Bolt, 5/16" x 2"	-	-
10	Lock Washer, 1/4"	-	-

### 7. Final Inspection

- Before operation, the machine should be checked over for any loose hardware, etc.
- All grease fittings should be checked for accepting grease.

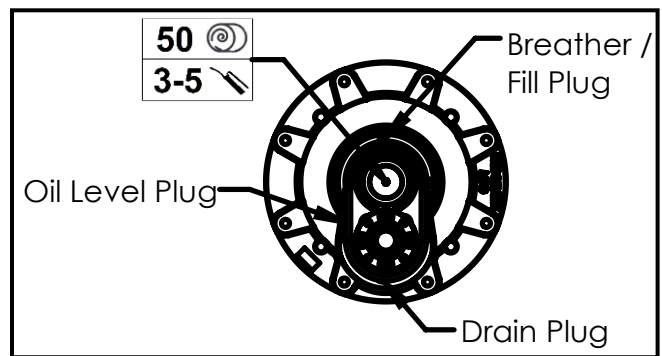


- The gear box requires GL5 80W90 gear oil. The oil should be filled to the level plug (approximately 500 mL). Ensure the breather is installed and free of obstruction.

- Check the functionality of the hydraulics as equipped:

- Rear fork lifts up and down
- Discharge deflector lifts up and down
- Agitators rotate both ways
- Grain augers turn one way only
- Three bale clamp arms open and close

- Connect the PTO shaft and spin the rotor up to PTO RPM. Check for any excessive vibrations and noises.



**\* MAKE SURE THAT THE TUB IS COMPLETELY EMPTY BEFORE RUNNING THE ROTOR. KEEP THE DISCHARGE AREA CLEAR AND LOWER THE DEFLECTOR AND DEFLECTOR RUBBER FULLY TO LIMIT AIR FLOW BEYOND THE TESTING AREA.**